

V. Behaviour in case of fire

Fire in the apartment



Fire in the stairwell



© www.rauchmelder-retten-leben.de

Operating instructions Smoke detector RM 680110



VI. German Electrical and Electronic Equipment Act (ElektroG)


We fulfil the obligations of the Electrical and Electronic Equipment Act (ElektroG) in Germany and draw your attention to the following:

Smoke detectors must not be disposed of in household waste. They contain valuable raw materials that are harmful to the environment and can be recycled. Batteries cannot be safely removed due to their design. Consumers are legally obliged to take the devices to a suitable collection point at retailers or public waste disposal companies, where they are separated from other old electrical appliances for the purpose of preparing them for reuse.



The waste bin symbol means that old electrical appliances must not be disposed of in household waste.

Ref. 6LE000113D Ind E · 88069 10.2022

 1772 Hager Safety SAS 364 Rue Jean MONNET 38920 Crolles France	EN 14604:2005 + AC 2008 Smoke detector RM 680110 Declaration of performance no.: 1772-130592 Intended purpose: Fire protection system 1 Vds no.: G214128 Hager Safety SAS hereby confirms that the smoke detector with item no. RM 680110 complies with the regulations of the following European directives: - Directive RE-D 2014/53/EU from 13 June 2017 The RoHS requirements are fulfilled.
---	---



I. Operating and warning signals at a glance

<ul style="list-style-type: none">))) Loud warning tone every 2 seconds ✱ LED flashes once every 2 seconds 		Alarm
<ul style="list-style-type: none">))) Quiet warning tone 3 times every 5 minutes ✱ LED flashes once every 5 seconds 		Device fault
<ul style="list-style-type: none">))) Quiet warning tone twice every 10 minutes ✱ LED flashes twice every 30 seconds 		Distance control
<ul style="list-style-type: none">))) Quiet warning tone 3 times every 15 minutes ✱ LED flashes 3 times every 15 minutes 		Disassembly detection
<ul style="list-style-type: none">))) Test tone (reduced volume) ✱ LED flashes simultaneously with test tone 		Functional check
<ul style="list-style-type: none">))) No acoustic signal ✱ LED does not flash 		OK Normal operation

II. Explanations



Alarm

Please refer to section V. - Behaviour in the event of fire (see reverse). In the event of an alarm, the RM 680110 smoke detector can be muted by pressing the test button. The LED continues to flash every two seconds. If the cause is not eliminated after 15 minutes, the alarm starts again.

Behaviour in the case of false alarm

Building dust, water or kitchen fumes can cause a false alarm (loud warning tone). A false alarm can be muted by pressing the test button. Ensure good ventilation of the room immediately.

If the warning tone still sounds, press the test button. Notify your neighbours as a precaution so that the fire brigade is not alerted without reason.

Behaviour in case of false alarm

A false alarm (a loud warning tone without a recognisable reason) can also be muted by pressing the test button. Notify your neighbours as a precaution so that the fire brigade is not alerted without reason.



Device fault

In the event of a device fault, the RM 680110 smoke detector can be muted by pressing the test button. A short tone sounds and the LED continues to flash. The muting of a fault message lasts for three days.

After muting three times, deactivation is only possible for one day at a time.

For the duration of the muting, the LED continues to flash once every five seconds.

Please arrange for a device replacement. Please contact your property management/landlord for this.

In the event of fault alarms (and repairs with missing new equipment), for safety reasons, the doors to rooms with functioning smoke detectors must be kept open until the defective smoke detector is replaced.



Distance control

In case of an alarm due to distance control, mute the RM 680110 smoke detector by pressing the test button. A short tone sounds and the LED continues to flash. The muting of a distance control lasts 3 days.

Remove all furniture and obstacles within a 50 cm radius of the

smoke detector. For the duration of the muting, the LED continues to flash twice every 30 seconds.

If the RM 680110 smoke detector has to be relocated, inform your property management/landlord to ensure that it can be professionally reinstalled.



Disassembly detection

Do not disassemble the RM 680110 smoke detector – except for renovations.

The smoke detector cannot be muted, see III. Safety instructions.



Functional check

When the test button is pressed, the RM 680110 smoke detector carries out a test of the smoke detector function.

Note that the device is then muted for 15 minutes. During this time, no acoustic alarm is given.



Normal operation

In normal operation, the RM 680110 smoke detector does not emit an acoustic signal and the LED does not flash.

III. Safety instructions

Procedure in the event of renovations

- **Do not disassemble** the RM 680110 smoke detector – except for renovations.
- During a renovation of the apartment, remove the device and store the detector and, if necessary, the base separately and dust-free in a plastic bag.
 - Do not paint, wallpaper or tape over the RM 680110 smoke detector.
 - To remove the device from the base, turn the housing anti-clockwise and remove it.
 - If the RM 680110 smoke detector remains dismantled for longer than a maximum of 2 weeks, it emits an acoustic signal (see table "I. Operating and warning signals at a glance – Disassembly detection"). The message disappears when the unit is screwed back into the base. It is not possible to mute the device when it is disassembled.
- After the renovation, immediately reassemble **the same device in the same place** and carry out a functional check by pressing the test button. The RM 680110 smoke detector is ready for operation when it is screwed into the base.
- If the smoke detector is disassembled for longer than 2 weeks, the service provider must be commissioned to carry out professional disassembly (muting by a specialist). Due to the otherwise continuous visual and acoustic fault signal, the battery is subject to excessive strain and may fail before the end of operation. Reassembly must also be carried out by the service provider to ensure that the apartment is equipped in accordance with DIN standards.

Keep a safe distance

- Do not position furniture, such as cupboards, curtains, canopies or lamps, **closer than 50 cm** to the RM 680110 smoke detector. If this is not possible, the service provider must, for example, reprogram the smoke detector in the apartment.

Immediately inform your property management/your landlord in the following cases:

- If there are structural changes and changes of use of individual rooms
- If, for example, the bedroom is divided or a room divider is installed or if the previous living room becomes a bedroom or children's room, as this requires additional RM 680110 smoke detectors

Note when using fans

Fans have a negative influence on the smoke inflow from the RM 680110 smoke detector and delay the detection of smoke.

Built-in battery

Do not open the RM 680110 smoke detector. The battery is permanently installed and does not need to be changed.

Assembly by certified specialists only

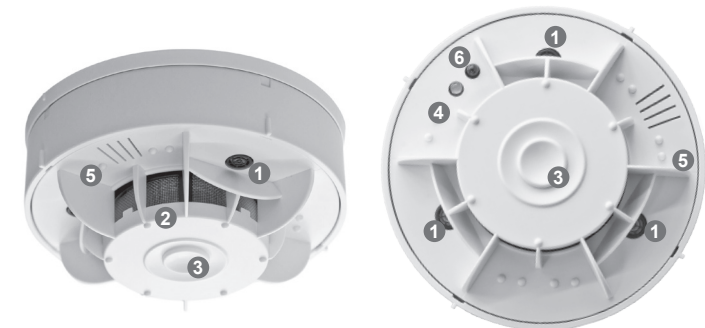
Assembly is carried out by certified specialists. They install the RM 680110 smoke detector with the enclosed mounting material (two plugs and screws each) in two-hole mounting according to DIN 14676.

RM 680110 smoke detector checks itself and the environment.

However, we also recommend carrying out an inspection at least once a year. No further maintenance of the RM 680110 smoke detector is required.

Functions

- 1 Ultrasonic sensors for distance control
- 2 Smoke entry opening
- 3 Test button
- 4 Red LED for visual indication
- 5 Loudspeaker for acoustic signal
- 6 Infrared diode for mounting



IV. Technical data

- The RM 680110 smoke detector is manufactured according to DIN EN 14604 and is distinguished by the "Q" label. The prerequisite for this is successful testing according to the strict requirements of vfdb¹ directive 14-01.
- Smoke detection using the scattered light method.
- Permanently installed battery with a life of ten years plus one year reserve.
- Infrared monitoring of the smoke entry openings.
- Ultrasonic distance control – automatic check whether there are obstacles within a radius of 50 cm, which can delay the penetration of smoke.
- Regular automatic function check, additional manual function check possible at any time via test button.
- Contamination detection and sensitivity tracking.
- Disassembly detection after removal of the detector from the base.
- All messages during the night – except the alarm of fire smoke – are postponed to the next day.

The RM 680110 smoke detector may not be suitable for persons with impaired perception. In this case, please contact your property management/landlord.

¹ vfdb : Vereinigung zur Förderung des Deutschen Brandschutzes e.V. (German Fire Protection Association)

